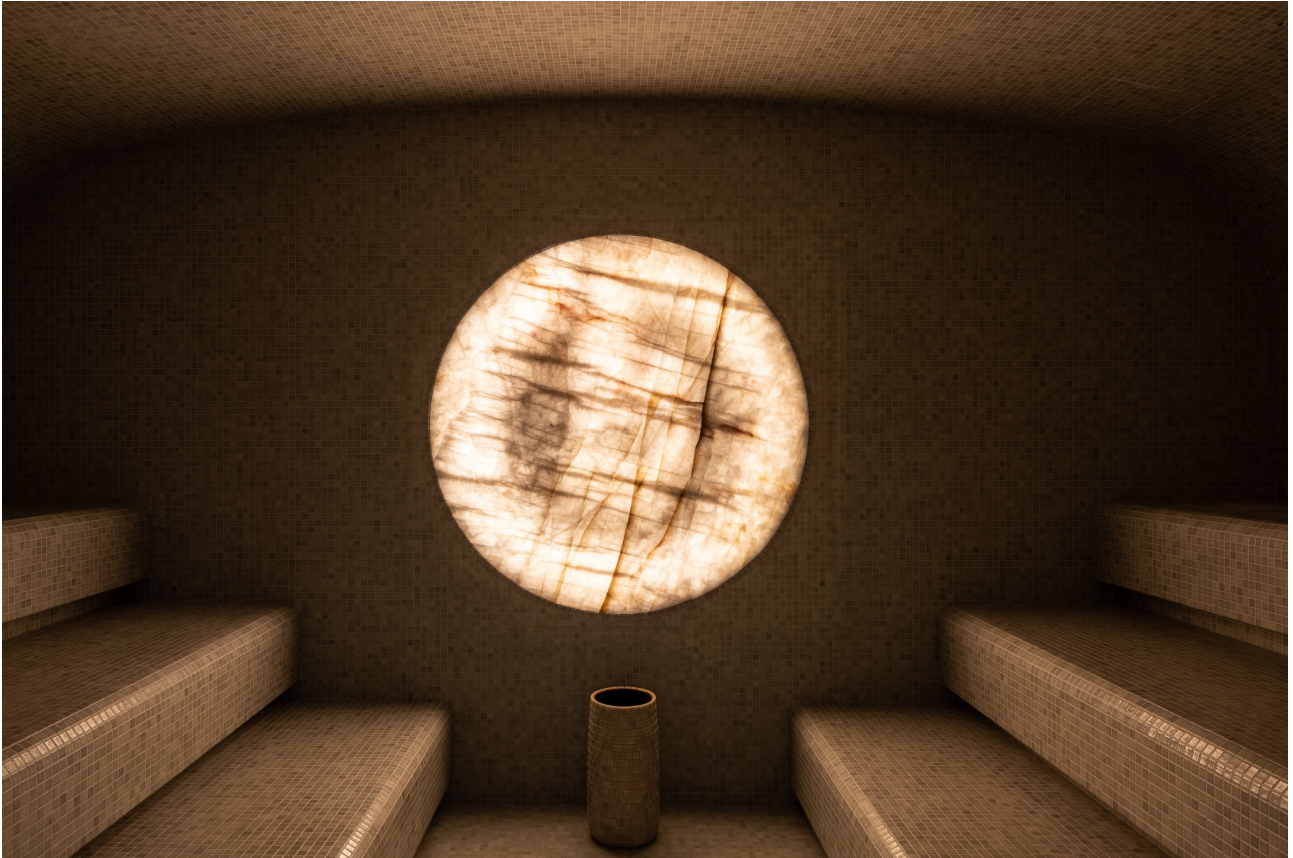


# Tiche House of Water

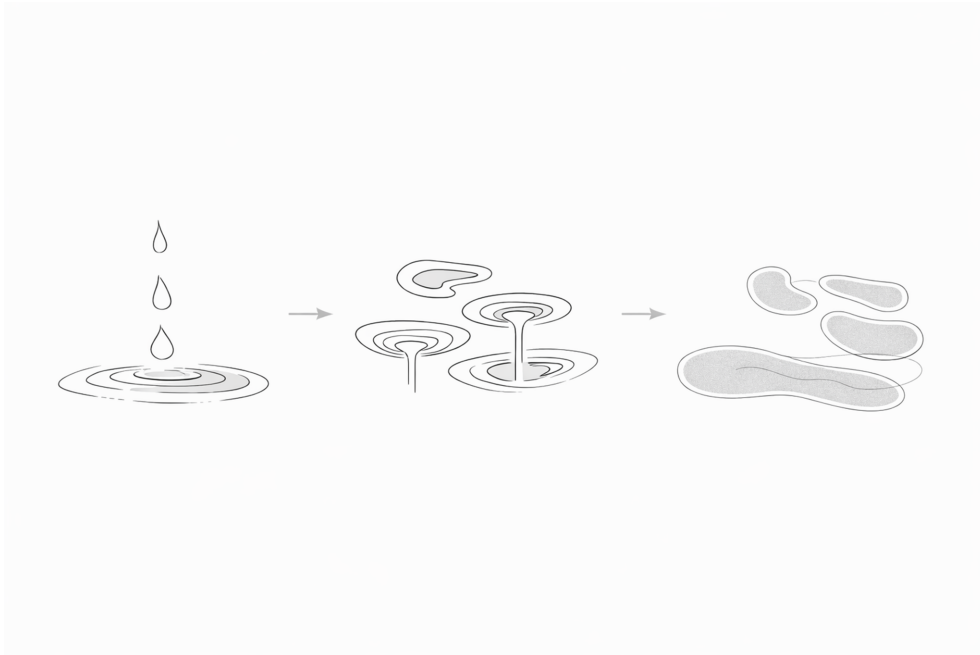
Wellness & Spa Innovation Awards 2026 Submission



A contemporary wellness environment inspired by the movement of water and the emotional experience of immersion. Designed by Lava Projects in Lithuania, the project transforms a technically complex structure into a sensory architectural landscape where light, materiality, reflections, and spatial flow become part of the wellness experience itself.

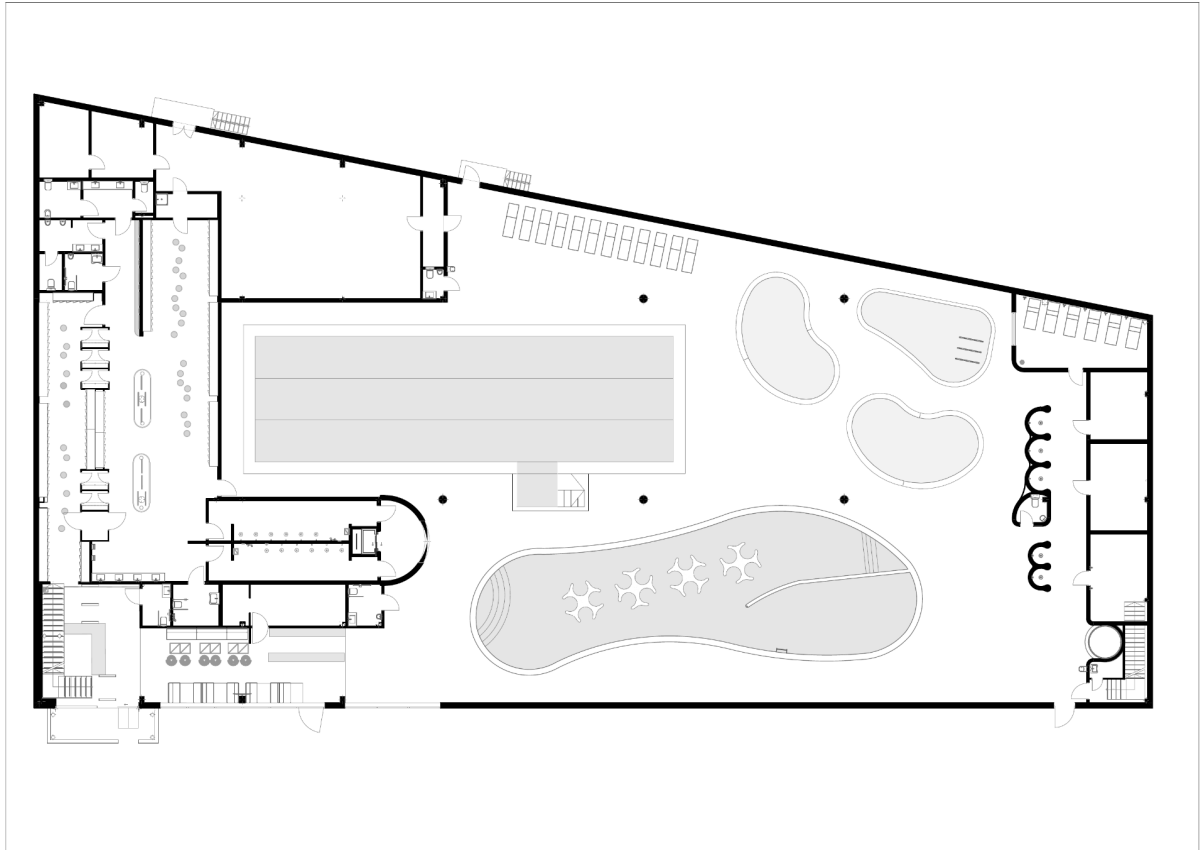
# Concept & Innovation

The project was inspired by the journey of water from deep underground layers to the surface. The idea of a single water drop and its expanding ripples became the core architectural principle shaping the spatial organization, lighting systems, textures, and atmosphere throughout the spa. Rather than applying decorative wellness motifs, the concept was integrated directly into the architecture itself. Circular lighting systems, reflective ceilings, curved forms, and immersive material transitions create a continuous sensory environment designed to reduce visual stress and encourage emotional calmness.



# Spatial Strategy

The planning strategy evolved from ripple-like geometries generated by the symbolic water source. Pools, circulation paths, and wellness zones were organized as fluid spatial islands rather than rigid rectangular spaces, creating a more natural and immersive visitor journey.



# Atmosphere & Materiality



# Atmosphere & Materiality



# Atmosphere & Materiality



# Atmosphere & Materiality



# Project Information

**Project:** Tiche House of Water

**Location:** Šiauliai, Lithuania

**Architecture:** Kristijonas Murauskas

**Interior Design:** Laura Gintilaite-Murauskiene, Greta Lindautaite

**Lighting Design:** Linas Kutavicius

The project complies with Lithuania's A++ energy efficiency standards and integrates custom lighting systems, immersive spatial sequencing, and sensory materiality into a unified wellness experience.